

## FINAL

Δάφνη Αγ. Δημ. **73** - **114** ΑΣ Πέρα

|     |         |    |         |     |
|-----|---------|----|---------|-----|
| 78% | 18 / 23 | FT | 16 / 27 | 59% |
| 53% | 17 / 32 | 2p | 37 / 52 | 71% |
| 35% | 7 / 20  | 3p | 8 / 18  | 44% |
| 21  | 15 - 6  | Rb | 24 - 16 | 40  |
|     | 23      | Tu | 14      |     |

Referees: Χρησιδης, Σιδέρης, Τερζής

| Each Period    | 1st | 2nd | 3rd | 4th |
|----------------|-----|-----|-----|-----|
| Δάφνη Αγ. Δημ. | 23  | 21  | 16  | 13  |
| ΑΣ Πέρα        | 27  | 33  | 30  | 24  |

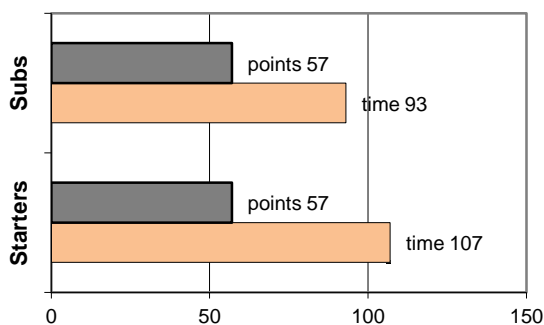
| End of Period  | 1st | 2nd | 3rd | 4th |
|----------------|-----|-----|-----|-----|
| Δάφνη Αγ. Δημ. | 23  | 44  | 60  | 73  |
| ΑΣ Πέρα        | 27  | 60  | 90  | 114 |

Coach: Γκαναβίας Π. - Φέρτης Ηλ.  
Α.Σ. ΠΕΡΑ

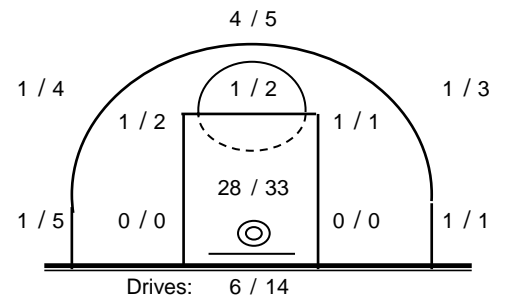
Fast Breaks 8 / 10

| # Player             | Time (min) | Points | Ft      | 2p      | 3p     | +/- | Rebs de | of | As | St | Tu | Bl | Fouls Wo | Co | Rkg* |
|----------------------|------------|--------|---------|---------|--------|-----|---------|----|----|----|----|----|----------|----|------|
| 4 Βαρδάλος Ηλ.       | 25         | 3      | 0 / 0   | 0 / 0   | 1 / 2  | 22  | 0       | 0  | 7  | 2  | 3  | 0  | 1        | 3  | 8    |
| 5 Θεολογίτης Σ.      | 16         | 1      | 1 / 2   | 0 / 4   | 0 / 2  | 21  | 2       | 0  | 6  | 4  | 1  | 0  | 2        | 1  | 5    |
| 16 Λάμπρου Π.        | 17         | 16     | 1 / 2   | 6 / 8   | 1 / 1  | 21  | 4       | 2  | 1  | 1  | 1  | 1  | 3        | 3  | 21   |
| 7 Καδηγιαννόπουλος Γ | 12         | 10     | 0 / 2   | 2 / 3   | 2 / 2  | 7   | 1       | 1  | 0  | 0  | 2  | 0  | 1        | 3  | 7    |
| 8 Ζέγγος Θ.          | 19         | 9      | 2 / 3   | 2 / 2   | 1 / 5  | 15  | 1       | 0  | 4  | 0  | 0  | 0  | 2        | 0  | 9    |
| 9 Τσαπραλής Ελ.      | 7          | 0      | 0 / 0   | 0 / 0   | 0 / 0  | 7   | 0       | 0  | 0  | 0  | 0  | 0  | 0        | 1  | 0    |
| 10 Φωτόπουλος Θ.     | 23         | 18     | 3 / 4   | 6 / 7   | 1 / 2  | 25  | 2       | 1  | 8  | 1  | 0  | 0  | 4        | 1  | 27   |
| 11 Καμπούρης Θ.      | 23         | 21     | 1 / 4   | 10 / 12 | 0 / 0  | 23  | 5       | 3  | 0  | 0  | 3  | 1  | 3        | 2  | 22   |
| 12 Πιτούλης Αχ.      | 28         | 17     | 1 / 3   | 8 / 11  | 0 / 0  | 33  | 5       | 7  | 4  | 3  | 1  | 1  | 3        | 2  | 31   |
| 13 Σωτηράκης Κ.      | 0          | 0      | 0 / 0   | 0 / 0   | 0 / 0  | 0   | 0       | 0  | 0  | 0  | 0  | 0  | 0        | 0  | -    |
| 17 Σκαλούμπακας Ν.   | 12         | 7      | 2 / 2   | 1 / 2   | 1 / 2  | 12  | 1       | 1  | 0  | 0  | 1  | 0  | 1        | 0  | 6    |
| 15 Βουρδέλης Γ.      | 18         | 12     | 5 / 5   | 2 / 3   | 1 / 2  | 19  | 2       | 1  | 2  | 2  | 0  | 0  | 2        | 2  | 17   |
| Team                 |            |        |         |         |        |     | 1       | 0  |    |    | 2  |    | 1        | 0  |      |
| 1st quarter          |            | 27     | 3 / 8   | 9 / 14  | 2 / 5  |     | 4       | 4  | 7  | 2  | 1  | 0  | 7        | 6  | 30   |
| 2nd quarter          |            | 33     | 6 / 9   | 9 / 9   | 3 / 5  |     | 4       | 1  | 11 | 6  | 5  | 2  | 6        | 5  | 47   |
| 3rd quarter          |            | 30     | 3 / 5   | 12 / 17 | 1 / 5  |     | 9       | 6  | 9  | 0  | 3  | 1  | 5        | 5  | 41   |
| 4th quarter          |            | 24     | 4 / 5   | 7 / 12  | 2 / 3  |     | 7       | 5  | 5  | 5  | 5  | 0  | 5        | 2  | 34   |
| Final Stats          | 200        | 114    | 16 / 27 | 37 / 52 | 8 / 18 | 205 | 24      | 16 | 32 | 13 | 14 | 3  | 23       | 18 | 152  |
|                      |            |        | 59%     | 71%     | 44%    |     |         | 40 |    |    |    |    |          |    |      |

Starters- Subs ratio



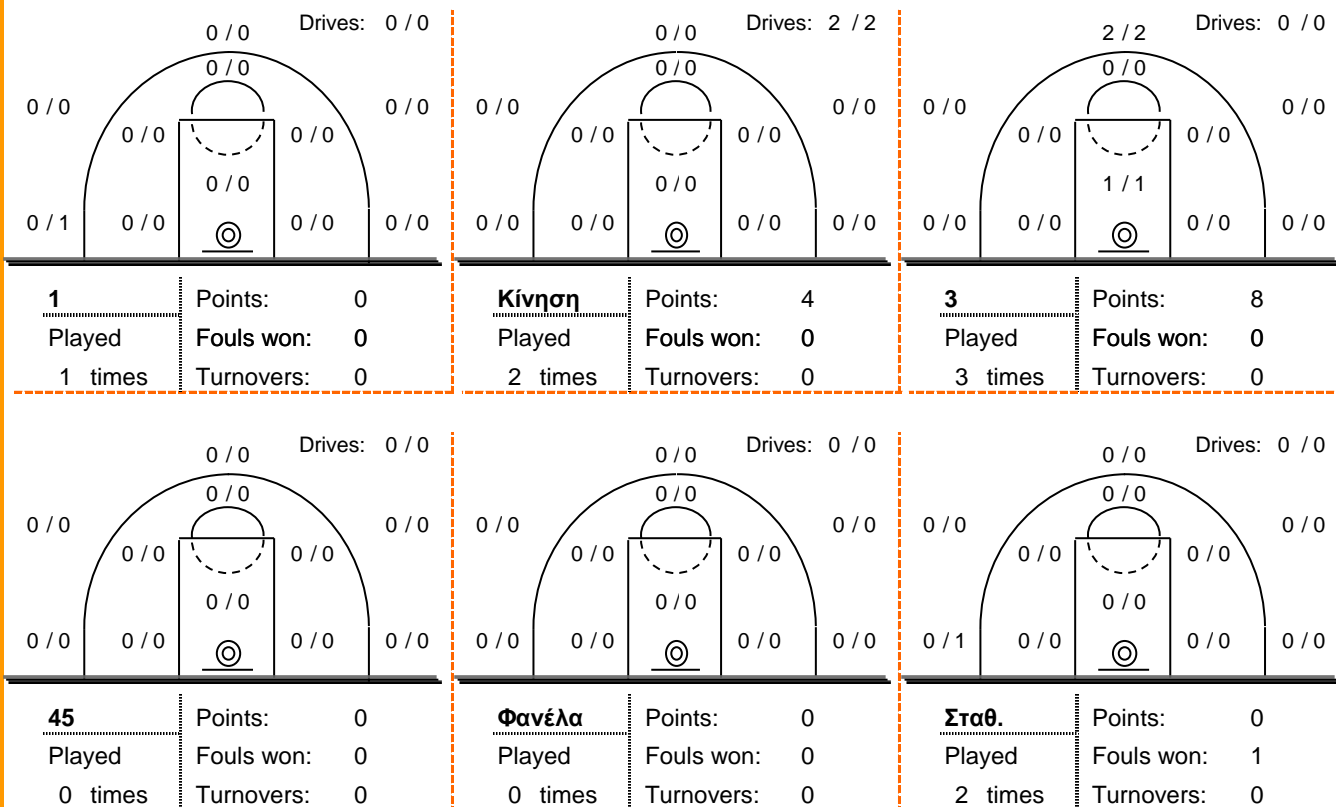
Shot Chart



\*Ranking= Pts+Rebs+As+St+B-Mished Shots-Tu (Time Played&gt;7min.)

## Offense Analysis

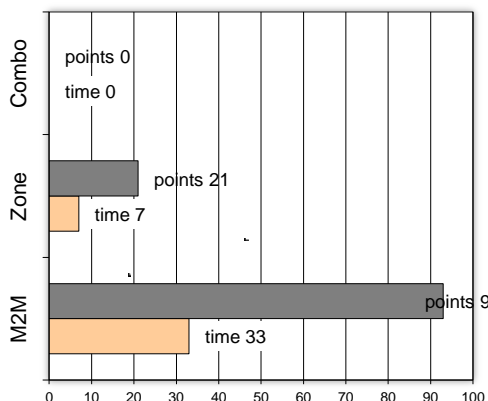
Play performance:



Against Defense Types:

Turnovers:

Fast breaks:



Έγιναν 14 λάθη  
1 ήταν χρονικές υπερβάσεις,  
0 ήταν παραβάσεις γραμμών,  
12 ήταν λάθη κατοχής και  
1 ήταν βήματα ή μεταφορά.

Επετεύχθησαν 8 αιφνιδιασμοί  
2 ήταν πρωτεύοντες  
0 ήταν δευτερεύοντες  
6 προήλθαν από λάθος του αντιπάλου

Πραγματοποιήθηκαν συνολικά 94 επιθέσεις, με απόδοση 1.21 έναντι 84 επιθέσεων των αντιπάλων.

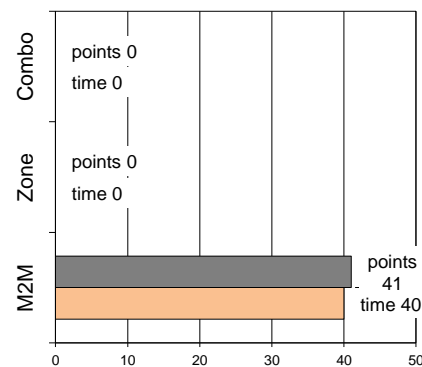
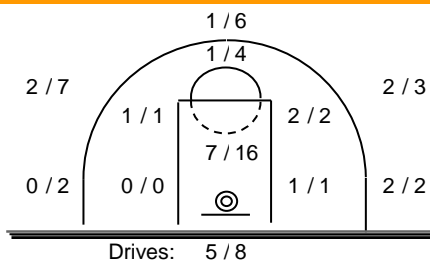
## Defense Analysis

Δάφνη Αγ. Δημ.

Opponent's shot chart

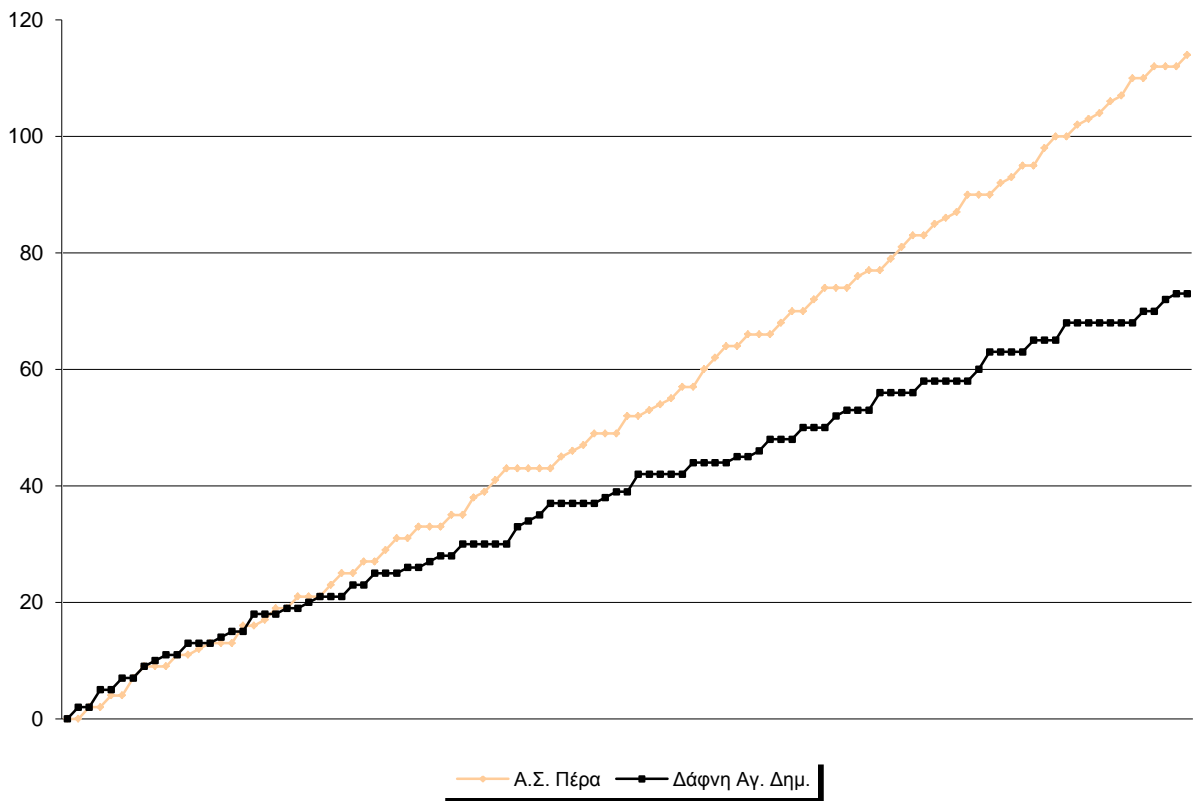
Defense Types Performance

|    |                    |    |    |
|----|--------------------|----|----|
| 4  | Μπακλαβάς Στ.      | 5  | -1 |
| 5  | Μανίκας Σ.         | 5  |    |
| 6  | Πολυτάρχου Ευ.     | 2  |    |
| 7  | Φωσές ΗΛ.          | 17 | -1 |
| 8  | Αλεξανδρόπουλος Θ. | 13 | -2 |
| 9  | Άμερσον Ντ.        | 7  | -1 |
| 10 | Παπαδόπουλος Ν.    | 9  | -1 |
| 11 | Ελενίτσας Ν.       | 0  |    |
| 12 | Μπέλλας Α.         | 0  |    |
| 13 | Διαμαντής Κ.       | 4  |    |
| 14 | Κόκκορης Ι.        | 0  |    |
| 15 | Τσιγγινόπουλος Κ.  | 11 | -1 |

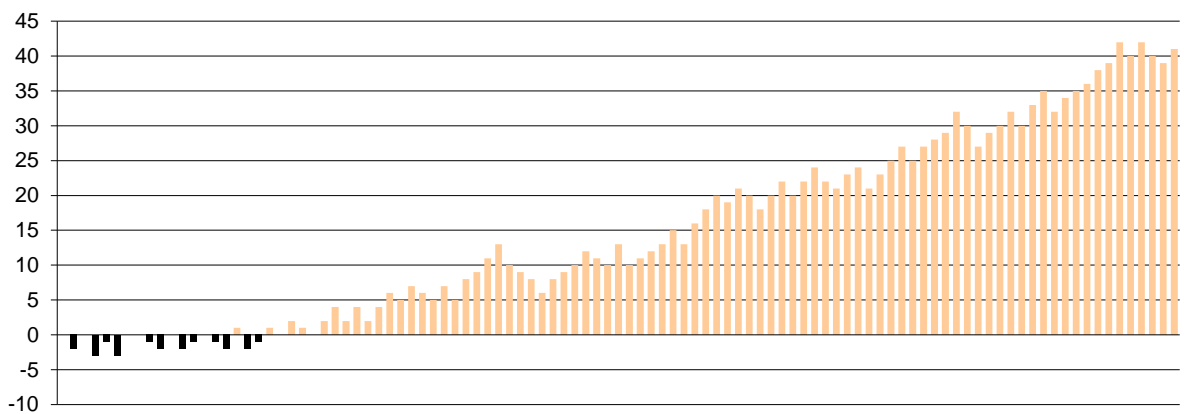


## Graphic Stats

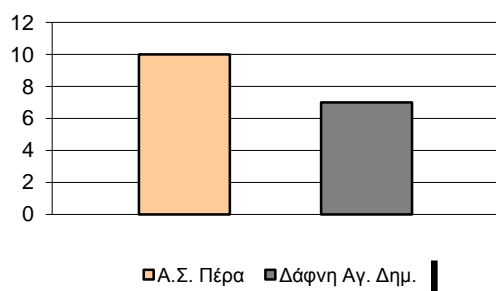
### Score Evolution



### Score Difference



### Largest Scoring Run



### Notes